

DESIGN
LINKED TO
FUNCTIONALITY
INSPIRATION BOOK



casala®

DESIGN LINKED TO FUNCTIONALITY

Casala specialises in the production of stylish contract furniture that excels in both design and functionality. "Design linked to Functionality" is deeply rooted within our DNA and plays a major role in the design process. We work together with leading designers in our industry. More than hundred years of experience in furniture guarantees that Casala furniture offers a lot of comfort and ease of use in addition to high quality.

casala[®]



Index

About Casala	6
Designers	10
Quality	12
Awards & Recognitions	14
Materials & Finishes	16
Casala Circular	18
Casala collection & Circularity	20
Circular activities	22
Take back guarantee	23
Collection	
Chairs	24
Barstools	70
Beam seating	80
Room-in-room	90
Modular	98
Sofas	110
Space dividers & Workspots	122
Tables	132
Coffee & Side tables	150
Collection overview	158
Product index	165

ABOUT CASALA

Casala was founded in 1917 in Lauenau, near Hannover (Germany). In the early years, wooden shoe soles were produced there, but soon the change was made to the production of wooden furniture. Over time, the focus was placed on metal and upholstered furniture with a sustainable character.

NL
Casala is in 1917 opgericht in Lauenau, nabij Hannover (Duitsland). In de beginjaren werden daar houten schoenzolen geproduceerd, maar al snel werd de omslag gemaakt naar de productie van houten meubelen. Na verloop van tijd werd de focus gelegd op metalen en gestoffeerde meubelen met een duurzaam karakter.

DE
Casala wurde 1917 in Lauenau, in der Nähe von Hannover (Deutschland), gegründet. In den Anfangsjahren wurden dort hölzerne Schuhsohlen hergestellt, doch schon bald wurde auf die Produktion von Holzmöbeln umgestellt. Im Laufe der Zeit wurde der Fokus auf Metall- und Polstermöbel mit nachhaltigem Charakter gelegt.

FR
Casala a été fondé en 1917 à Lauenau, près d'Hanovre (Allemagne). Dans les premières années, l'entreprise fabrique des semelles de chaussures en bois, mais elle s'oriente rapidement vers la production de meubles en bois. Au fil du temps, l'accent a été mis sur le mobilier en métal et tapissé à caractère durable.





Nowadays Casala is located in Culemborg (NL) with offices in Germany, England and France. Currently Casala offers a complete collection of high-quality contract furniture, soft seating, circular and refurbished furniture.



London - UK



Culemborg - NL



Garches - FR



Lauenau - DE

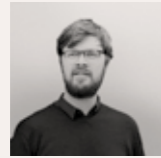
NL
Tegenwoordig is Casala gevestigd in Culemborg (NL) met vestigingen in Duitsland, Engeland en Frankrijk. Vandaag de dag biedt Casala een complete collectie hoogwaardig projectmeubilair, soft seating, circulair en gerefabrished meubilair.

DE
Der Hauptsitz befindet sich heute in Culemborg (NL) mit Niederlassungen in Deutschland, England und Frankreich. Heutzutage bietet Casala eine komplette Kollektion an hochwertigen Objektmöbeln, weichen Sitzmöbeln, nachhaltigen und aufgearbeiteten Möbeln.

FR
De nos jours, Casala est installé à Culemborg (NL) et possède des filiales en Allemagne, en Angleterre et en France. Actuellement, Casala propose une collection complète de meubles contract, de canapés et de meubles circulaires et rénovés haut-de-gamme.



Amsterdam - NL



BRUNO VERMEERSCH



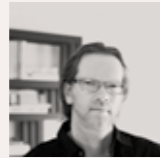
ANDREAS OSTWALD



ARIK LEVY



BJÖRN MULDER



GERARD DE HOOP



ERIK MUNNIKHOF



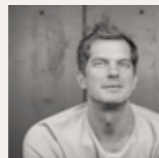
GIANCARLO BISAGLIA



JENS KORTE



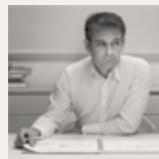
KATERYNA SOKOLOVA



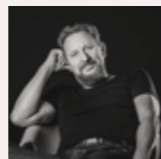
KINZO DESIGN STUDIO



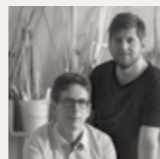
KOMMERKORS & ESQUISSE



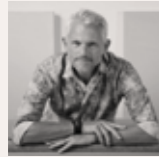
MARIO RUIZ



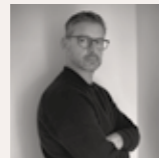
MARTIN BALLENDAT



MURKEN HANSEN



ROBERT BRONWASSER



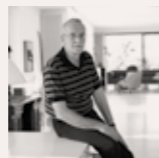
MICHAEL HILGERS



WARD HUTING



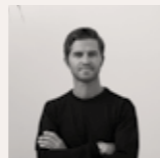
DELPHIN DESIGN



SIGURD ROTHE †



KRESSEL + SCHELLE



FAVARETTO & PARTNERS

WE WORK CLOSELY
WITH A NUMBER OF
LEADING DESIGNERS
WITH WHOM WE ARE
ABLE TO DEVELOP
SUSTAINABLE, HIGHLY
VERSATILE AND
INSPIRING PRODUCTS

QUALITY

Technique, design and our values are the key elements that guarantee Casala's quality. Our furniture is produced in the Netherlands. The parts are delivered by highly qualified suppliers with whom we have been working for many years. Partly due to this, our furniture complies to the latest technical developments and is manufactured with the greatest care. A guarantee of five years on material and construction goes without saying for us. Thanks to the established quality requirements and the production control processes, Casala furniture guarantees excellent quality and a long lifespan.



NL

Techniek, ontwerp en onze waarden zijn de elementen die Casala's kwaliteit garanderen. Ons meubilair wordt geproduceerd in Nederland. De onderdelen worden geleverd door hoogwaardige leveranciers, waarmee wij al jaren samenwerken. Mede hierdoor voldoet ons meubilair aan de allernieuwste technische ontwikkelingen en wordt het met de grootste zorg vervaardigd. Een garantie van vijf jaar op materiaal en constructie is voor ons vanzelfsprekend. Dankzij de opgestelde kwaliteitseisen en controle van productieprocessen staat Casala meubilair garant voor een uitstekende kwaliteit en een lange levensduur.

DE

Die Technik, das Design und wir selbst sind Elemente, welche die Qualität von Casala ausmachen. Unsere Möbel werden in den Niederlanden hergestellt. Die Teile werden von hochwertigen Lieferanten geliefert, mit denen wir seit Jahren zusammenarbeiten. Nicht zuletzt deshalb entsprechen unsere Möbel dem neuesten Stand der Technik und werden mit größter Sorgfalt hergestellt. Eine fünfjährige Garantie auf Material und Konstruktion ist für uns selbstverständlich. Dank der aufgestellten Qualitätsanforderungen und der Kontrolle der Produktionsprozesse sind Casala-Möbel ein Garant für ausgezeichnete Qualität und lange Lebensdauer.

FR

Technique, design et engagement personnel sont les ingrédients de la qualité Casala. Notre mobilier est produit aux Pays-Bas. Les pièces sont fournies par des partenaires hautement qualifiés, avec qui nous travaillons depuis de nombreuses années. Notre mobilier est ainsi fabriqué avec le plus grand soin et bénéficie des développements techniques les plus récents. Dès lors, offrir une garantie de cinq ans sur les matériaux et la construction va de soi. Grâce aux exigences de qualité et aux contrôles des procédés de production, le mobilier Casala rime avec qualité irréprochable et longévité.



AWARDS & RECOGNITIONS



Omega
German Design Award 2024



Monolink
Interior Innovation Award 2013
German Design Award 2015



Capsule
FX Award winner 2018
(Product of the Year)
German Design Award 2020



Lacrosse
IF Universal Design Award 2015



Parker
Reddotdesign Award 2012
FX Award Finalist 2012
German Design Award 2013



Lynx
FX Award 2007
Reddotdesign Award 2008
Benelux Office Award 2008



Feniks
AIT Award 2004
Neocon Award 2006
(category linking)



Centuro
FX Award finalist 2018



Zifra
Reddotdesign Award 2012
RCT Innovation Award 2013
AIT Award 2014
Interior Innovation Award 2014
German Design Award 2015



Curvy
Neocon Award 2005
(category stacking)

MATERIALS & FINISHES

Casala's materials and finishes combine a harmonious blend of colours and patterns ensuring they both complement and integrate effortlessly with each interior concept for professional and public spaces. In today's world, the choice of materials is not just about design and functionality, but also about the broader impact on our environment. Our materials contain a high percentage of recycled content and meet various standard certifications. We are continuously looking for innovative and sustainable materials and production techniques, while maintaining commitment to quality, sustainability and our philosophy "Design Linked to Functionality".

NL

De materialen en afwerkingen van Casala combineren een harmonieuze mix van kleuren en patronen, waardoor ze elk interieurconcept voor professionele en openbare ruimtes aanvullen en moeiteloos integreren. Vandaag de dag gaat het bij de materiaalkeuze niet alleen om design en functionaliteit, maar ook om de bredere impact op het milieu. Onze materialen bevatten een hoog percentage gerecyclede content en voldoen aan diverse certificeringen. We zijn voortdurend op zoek naar innovatieve en duurzame materialen en productietechnieken, terwijl we ons blijven inzetten voor kwaliteit, duurzaamheid en onze filosofie 'Design Linked to Functionality'.

DE

Die Materialien und Oberflächen von Casala vereinen eine harmonische Mischung aus Farben und Mustern, so dass sie sich mühelos in jedes Einrichtungskonzept für professionelle und öffentliche Räume einfügen. In der heutigen Zeit geht es bei der Auswahl von Materialien nicht nur um Design und Funktionalität, sondern auch um die Auswirkungen auf unsere Umwelt. Unsere Materialien enthalten einen hohen Anteil an recycelten Bestandteilen und erfüllen verschiedene Standardzertifizierungen. Wir sind ständig auf der Suche nach innovativen und nachhaltigen Materialien und Produktionstechniken, wobei wir unser Engagement für Qualität, Nachhaltigkeit und unsere Philosophie „Design Linked to Functionality“ beibehalten.

FR

Les matériaux et finitions Casala combinent un assortiment harmonieux de coloris et de motifs, leur permettant de compléter et de s'intégrer aisément à tous types d'intérieurs dans les espaces professionnels et publics. Dans le monde actuel, le choix des matériaux n'est pas seulement une question de design et de fonctionnalité, mais aussi d'impact sur notre environnement. Nos matériaux contiennent un taux élevé de contenu recyclé et répondent à diverses certifications. Nous sommes continuellement en quête de matériaux et de techniques de production innovants et durables, tout en maintenant notre engagement envers la qualité, la durabilité et notre philosophie : « Le mariage du design et de la fonctionnalité ».



Scan to view the full collection materials & finishes

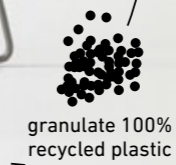


CASALA CIRCULAR

Our goal in terms of the Circular Economy is simple but effective: successful corporate social responsibility with the focus on a sustainable world. To achieve this, we take steps in all areas that help us and our clients to create beautiful and functional furniture with as little impact on the Earth as possible. In doing so, we do not only look at our own activities. We are also constantly looking for the optimal circular working methods with our suppliers and clients.



Shell made from
100% recycled PET



Frame made from
80% recycled steel



Read all about our circular activities at www.casala.com/circular

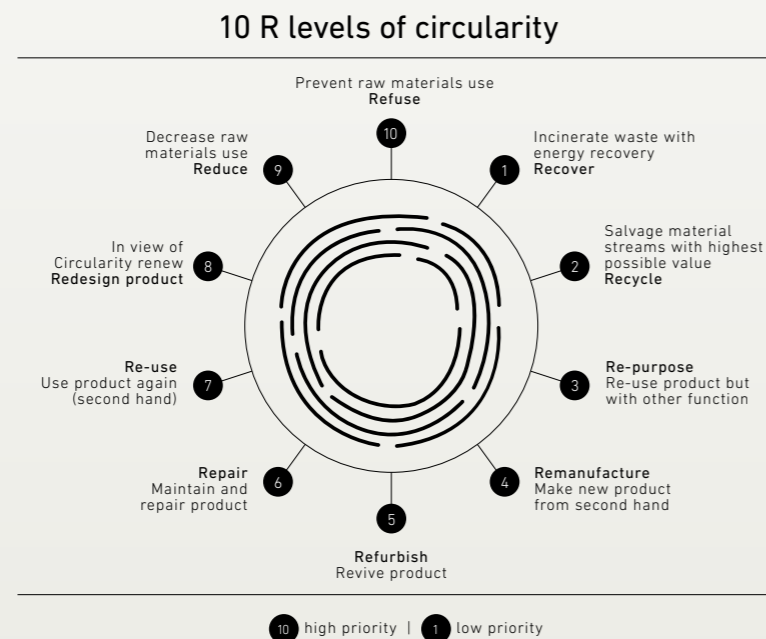
NL
Onze doelstelling ten aanzien van de Circulaire Economie is simpel maar effectief: succesvol maatschappelijk verantwoord ondernemen met de focus op een duurzame wereld. Hiervoor nemen we op alle gebieden stappen die ons en onze klanten helpen om mooie en functionele inrichtingen te realiseren, met zo min mogelijk impact op de aarde. Wij kijken hierbij niet enkel naar onze eigen activiteiten. Ook met onze toeleveranciers en klanten zoeken wij continu naar de optimale circulaire werkwijze.

DE
Unser Ziel in Bezug auf Kreislaufwirtschaft ist einfach, aber effektiv: Erfolgreiche Corporate Social Responsibility mit Fokus auf eine nachhaltige Welt. Zu diesem Zweck unternehmen wir Schritte in allen Bereichen, die uns und unseren Kunden helfen, schöne und funktionelle Einrichtungen mit möglichst geringen Auswirkungen auf die Erde zu schaffen. Hierbei betrachten wir nicht nur unsere eigenen Aktivitäten, wir sind auch mit unseren Lieferanten und Kunden ständig auf der Suche nach der optimalen zirkulären Arbeitsweise.

FR
Notre objectif par rapport à l'économie circulaire est aussi simple que concret : réussir à entreprendre de manière responsable en participant à un monde durable. Pour ce faire, nous agissons dans tous les domaines qui nous permettent, ainsi qu'à nos clients, de réaliser des aménagements aussi beaux que fonctionnels avec un impact minime sur la planète. Dans cette démarche, nous ne nous contentons pas de prendre nos propres activités en considération. Avec nos fournisseurs et nos clients, nous sommes constamment à la recherche des méthodes de travail circulaires optimales.

CASALA COLLECTION & CIRCULARITY

Casala Furniture has an excellent story to tell within the Circular Economy. The whole collection has been developed on the basis of sustainable principles. We guarantee the take back of all Casala products after a long period of use. This applies both to new deliveries as well as already-delivered Casala products. After recovery, we integrate this furniture into our circular ReFurniture activities. For all Casala products, we guarantee the recovery and re-use to the highest possible level according to the 10 R levels of circularity, including existing Casala products.



NL

Casala meubilair is uitstekend toe te passen in de Circulaire Economie. De gehele collectie is ontwikkeld op basis van duurzame principes. Wij garanderen terugname van alle Casala producten na een lange gebruiksduur. Dit geldt zowel voor nieuw te leveren als reeds geleverde Casala producten. Na terugname integreren wij deze meubels in onze circulaire ReFurniture activiteiten. Wij garanderen terugname en hergebruik, op een zo hoog mogelijk niveau volgens de 10 R-niveaus van circulariteit, voor alle Casala producten.

DE

Casala-Möbel lassen sich in der Kreislaufwirtschaft ausgezeichnet verwenden. Die gesamte Kollektion wurde auf der Grundlage nachhaltiger Prinzipien entwickelt. Wir garantieren die Rücknahme aller Casala-Produkte nach einer langen Nutzungsdauer, und das gilt sowohl für neue als auch für bereits gelieferte Casala-Produkte. Nach der Rücknahme integrieren wir diese Möbel in unsere zirkulären ReFurniture-Aktivitäten. Wir garantieren für alle Casala-Produkte die Rücknahme und Wiederverwendung in höchster Qualität gemäß den 10 R-Stufen der Kreislaufwirtschaft.

FR

Le mobilier Casala s'inscrit parfaitement dans l'économie circulaire. Toute la collection repose sur des principes durables. Nous garantissons la reprise de tous les produits Casala après une longue durée d'utilisation. Cela vaut tant pour les produits Casala encore à livrer que pour ceux qui l'ont déjà été. Après leur reprise, nous intégrons ces meubles dans nos activités circulaires ReFurniture. Pour tous les produits Casala, nous garantissons la reprise et la reprise et la réutilisation au plus haut niveau de qualité selon les 10 niveaux « R » de la circularité.

CIRCULAR ACTIVITIES

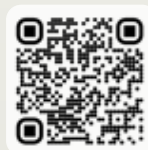


Used furniture that we refurbish for a second life. Casala offers a varied range of furniture from our own and other brands that are given a new life after being refurbished in our production plants. This furniture will be delivered with a guarantee and in the colour and design desired by the client.

NL
Gebruikt meubilair dat wij geschikt maken voor een tweede leven. Casala biedt een variërend assortiment van meubilair van eigen en andere merken aan dat een nieuw leven krijgt, na in onze productiebedrijven te zijn refurbished. Dit meubilair wordt met garantie geleverd in de door de klant gewenste kleur en uitvoering.

DE
Hier werden Möbel verwendet, die wir für ein zweites Leben vorbereiten. Casala bietet ein vielseitiges Sortiment aus eigenen und anderen Marken an, die nach einem Refurbishing in unseren Produktionsstätten ein neues Leben erhalten. Diese Möbel werden mit Garantie in der vom Kunden gewünschten Farbe und Ausführung geliefert.

FR
Nous donnons une seconde vie au mobilier usagé. Casala propose une gamme variée de mobilier de sa propre marque et d'autres marques qui obtiennent un nouveau souffle après une rénovation dans nos unités de production. Ce mobilier est livré avec garantie dans le coloris et les finitions souhaités par le client.



Scan to view the current ReFurniture offer

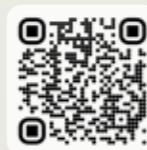


Casala furniture that is surplus for various reasons. This consists of new furniture that is available at competitive prices. In this way, the furniture is given a functional purpose instead of being recycled.

NL
Casala meubilair dat om diverse redenen overtollig is. Dit betreft nieuw meubilair dat tegen scherpe prijzen beschikbaar is. Zodoende krijgen deze meubelen alsnog een functionele bestemming in plaats van dat ze gerecycled worden.

DE
Hier finden sich Casala-Möbel, die aus verschiedenen Gründen überschüssig sind. Diese Möbel sind zu konkurrenzfähigen Preisen erhältlich, und so erhalten sie einen funktionalen Zweck, anstatt recycelt zu werden.

FR
Le mobilier Casala devenu excédentaire pour une raison ou pour une autre. Il s'agit de mobilier neuf disponible à petit prix. Ce qui permet de profiter encore pleinement de la fonctionnalité de ces meubles au lieu de les recycler.

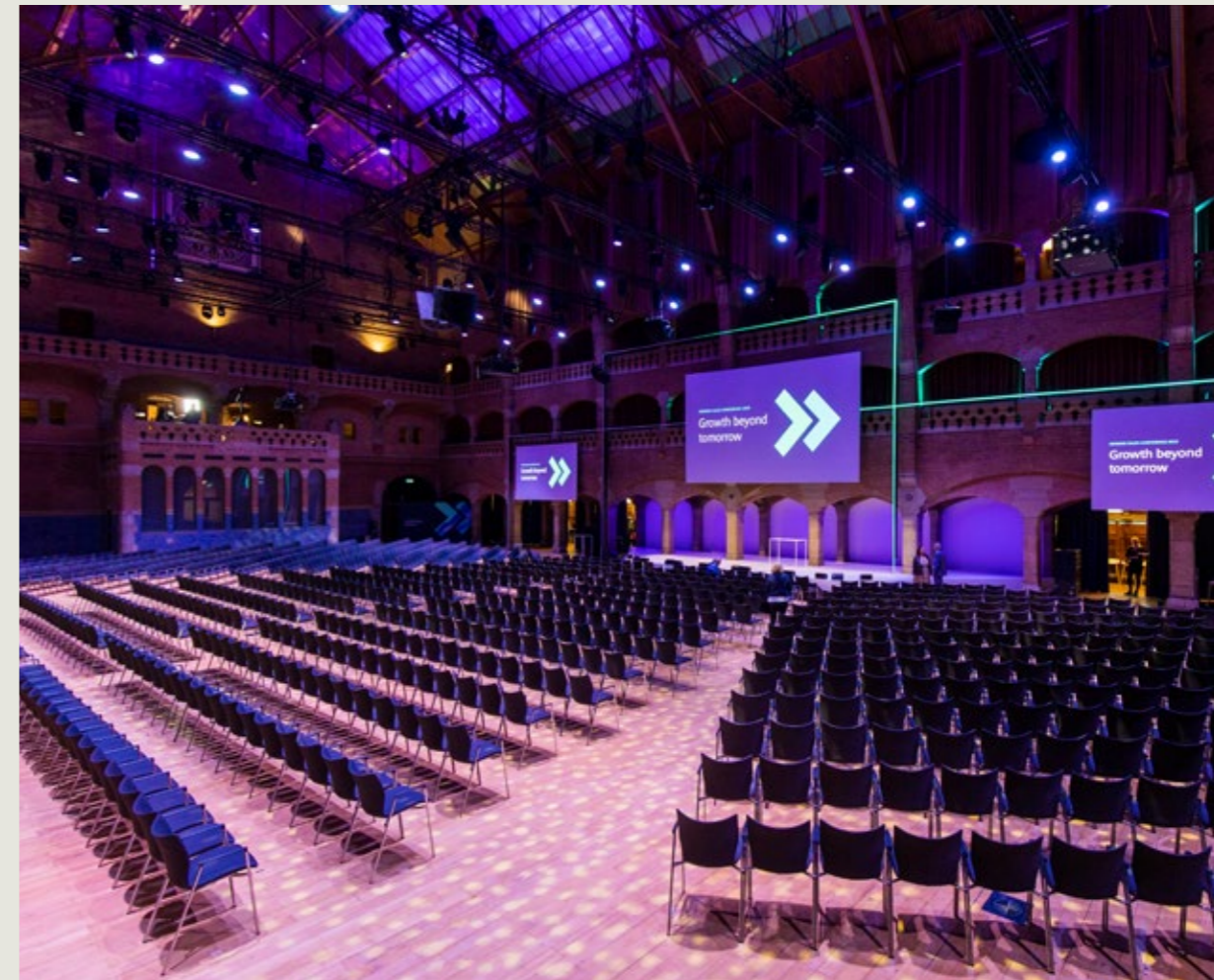


Scan to view the current OutletFurniture offer



TAKE BACK GUARANTEE

Do you have used Casala furniture? For all furniture produced by Casala, we guarantee take back and processing into new products. That also applies to >15-year-old furniture.



Location
Beurs van Berlage,
Amsterdam - NL

Products
Lynx

Architect
Scott Tallon Walker

Photography
Igor Roelofsen

NL
Heeft u gebruikt Casala meubilair? Casala garandeert terugname en verwerking tot nieuwe producten voor alle door Casala geproduceerde meubels. Ook meubilair van 15 jaar en ouder.

DE
Haben Sie gebrauchte Casala-Möbel? Casala garantiert für alle von Casala produzierten Möbel die Rücknahme und Verarbeitung zu neuen Produkten. Das gilt auch für Möbel, die >15 Jahre alt sind.

FR
Vous avez du mobilier Casala usagé? Casala garantit la reprise et la transformation en nouveaux produits pour tous les meubles produits par la marque. Même s'ils datent de >15 ans.

Collection Chairs

Products
Leon

Location
Canon, Venlo - NL

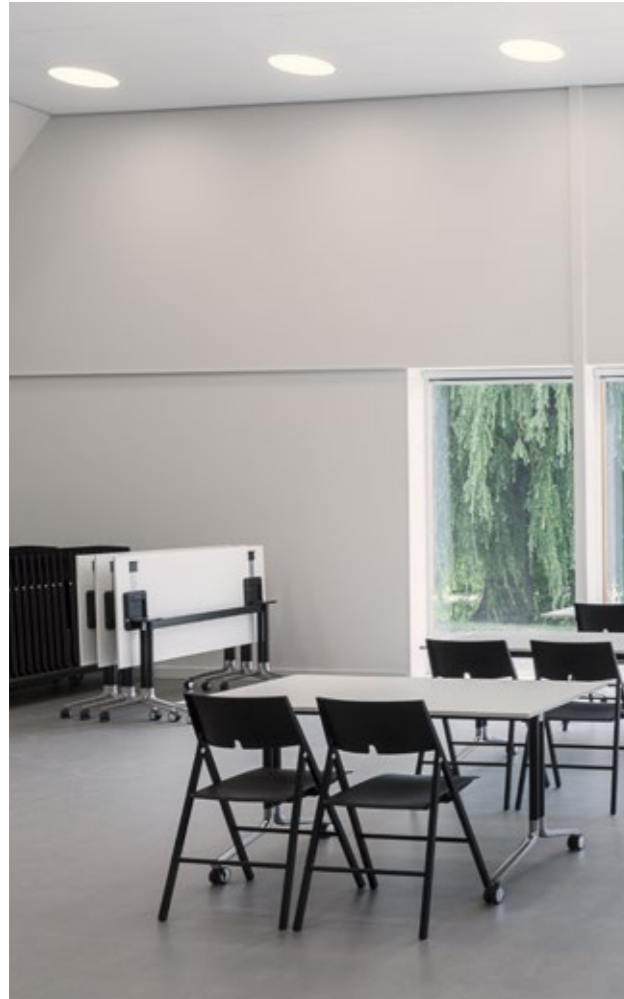
Supplier
Gispen

Architect
M+R interior architecture

Photography
Herman de Winter

AXA

Design Giancarlo Bisaglia



Location
Dukdalf, Lelystad - NL

Products
Axa, Temo Fliptop

Supplier
Noordhuis

Photography
Chris van Koeverden



BLUE

Design Mario Ruiz



Location
Haus Amandum, Oranienburg - DE

Products
Blue, Gabo, Temo III

Architect
Poschmann Design GmbH

Photography
Ben Pohle

CENTURO

Design Andreas Ostwald



Andreas Ostwald

Andreas Ostwald (1964) studied Industrial Design in Kiel, Germany. In 1996 he started OstwaldDesignStudio. In his research process, Ostwald is always looking for uniqueness, leading to the creation of special products. At the core of his philosophy is the ambition for aesthetic perfection, attainable only through absolute proportions, with numerous design awards as a result.





Location
Goudappel, Deventer - NL

Products
Centuro, Temo

Supplier
Dock84

Photography
Chris van Koeverden

CURVY FAMILY

Design Sigurd Rothe



Sigurd Rothe

In Sigurd Rothe's († 2015) own opinion the quality of his designs is in the integration into the unity. Between 1970 and 1979 he was employed by several design agencies and organizations, and in 1979 he started his own studio. In addition to developing products he carries out research assignments as well and he produces models and prototypes. His designs vary from shop interiors to medical aids.



Location
Lochal, Tilburg - NL

Products
Curvy

Architect
Mecanoo architecten

Photography
Tarkett



Location
Westminster Abbey
London - UK

Products
Curvy, Zifra

Photography
Chris van Koeverden



CASE STUDY WESTMINSTER ABBEY

Westminster Abbey is known worldwide as one of the most important buildings in the UK. Since the 11th century Westminster Abbey has been the scene of royal coronations, weddings and funerals. Westminster Abbey were looking for a functional chair that also fitted in perfectly with the aesthetics, architecture and atmosphere of the Abbey. This was an excellent opportunity for Casala to develop a customised chair that perfectly met their expectations.

NL

Westminster Abbey staat wereldwijd bekend als een van de belangrijkste gebouwen in het Verenigd Koninkrijk. Al sinds de 11e eeuw is Westminster Abbey het toneel van koninklijke kroningen, huwelijken en begrafenis. Westminster Abbey zocht een functionele stoel die ook op esthetisch vlak perfect bij de architectuur en sfeer van de abdij past. Voor Casala een uitgelezen kans om een op maat gemaakte stoel te ontwikkelen die perfect aansluit bij de verwachtingen van de kerk.

DE

Westminster Abbey ist weltweit bekannt als eines der wichtigsten Gebäude in UK. Seit dem 11. Jahrhundert finden dort die königlichen Krönungszeremonien, Hochzeiten und Trauerfeiern statt. Westminster Abbey suchte einen funktionalen Stuhl der sich perfekt einfügt in die Ästhetik, Architektur und Atmosphäre der Abtei. Für Casala eine hervorragende Gelegenheit, einen kundenspezifischen Stuhl zu entwickeln, der perfekt den Erwartungen entspricht.

FR

L'Abbaye de Westminster est mondialement connue comme l'une des bâtiments les plus importants de Grande-Bretagne. Depuis le 11ème siècle, l'Abbaye accueille les couronnements, mariages et funérailles royaux. L'Abbaye de Westminster recherchait une chaise fonctionnelle s'accordant parfaitement à l'esthétique, l'architecture et l'atmosphère du lieu. Pour Casala, c'était une excellente opportunité de développer un siège sur-mesure remplissant parfaitement ces exigences.



Scan to view the full
project online

CURVY

Design Sigurd Rothe





Location
Conservatorium, The Hague - NL

Products
Curvy, Class

Supplier
Gispén

Photography
Alex Schröder

FENIKS

Design Kressel+Schelle



Kressel+Schelle

Jonas Kressel, born in 1961, and Ivo Schelle, born in 1962, won all the prominent awards in Germany, from 'Red Dot' up to and including 'if Design Award'. In Chicago they received the 'NeoCon Award' for their Feniks chair. When asked for the secret of their success, their answer is: 'We find the solution in detail'. Style is also important in this respect, but the distinguishing factor is functionality.





FLOYD

Design Björn Mulder



Björn Mulder

Björn Mulder (1967, Kaapstad, Zuid-Afrika) grew up in South Africa. After completing secondary school in Cape Town, he moved to the Netherlands for further education at the Royal Academy of Art in The Hague. In 1990 he graduated Cum Laude as an architectural designer. Afterwards, Mulder worked as a project manager and designer at Jan Brouwer and associates, Rob Eckhardt and Macie Concepts. Since 1995, he has been working as an independent designer, from furniture design to interior projects.

LYNX^{X1}

Design Kommerkors & Esquisse





Location
Postillion Hotels, Bunnik - NL

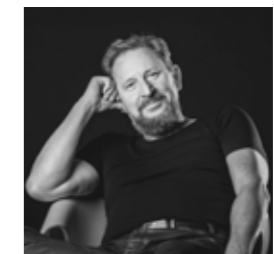
Products
Lynx[®]

Photography
Caroline Martinot



MONOLINK

Design Martin Ballendat



Martin Ballendat

Martin Ballendat (1958) studied Industrial Design in Essen, Germany and started his own design agency at Attersee, Austria in 1995. Since then he has been awarded more than 100 design awards. For Casala he designed Monolink, the one-piece plastic chair with a built-in system for linking and stacking.



Location
Hart van Holland, Nijkerk - NL

Products
Monolink

Supplier
Boom Kantoorprojecten

OMEGA

Design Favaretto & Partners



Francesco Favaretto

Favaretto & Partners was founded in 1973. Reliability and proven competence have helped the studio of industrial design and interior architecture to establish longlasting international relationships. Core values of the studio include the relevance in the application of materials and the research for innovation in form and function.



Location
Codex, Rotterdam - NL

Products
Omega

Photography
Casala





ONYX

Design Kommerkors

PARKER

Design Kressel+Schelle





Location
Palace of Justice, Den Bosch - NL

Products
Parker

Architect
Fokkema & Partners Architecten

Photography
Lucas van der Wee



RAMA

Design Arik Levy



Arik Levy
Arik Levy (1963) was born in Israel and moved to Europe in 1988. He worked from Paris, where he and his Art & Design Studio made creations in different areas in collaboration with his design team. Within the general public, he is best known for his art and industrial design.





ZIFRA

Design Studio Casala



Zifra digital chair numbering

Zifra is the world's most innovative digital display system without batteries, that has extensive display options such as seat numbers, row numbers, letter display, company logos and QR-codes. Depending on your wishes, you can make various display combinations. With the unparalleled range of innovative display options Zifra can be adapted to any imaginable room lay-out. In addition, individual adaptation to the situation is possible.



Scan for more information

Collection Barstools



AXA

Design Giancarlo Bisaglia



Giancarlo Bisaglia

Giancarlo Bisaglia studied at the Padua Art Institute in Italy and has been active in the design industry for many years. In 1993 he founded Global Design Studio, where he mainly worked on the design of office products, ranging from chairs to table systems. Bisaglia has designed more than 150 chairs with which he has won several international awards.



CURVY

Design Sigurd Rothe



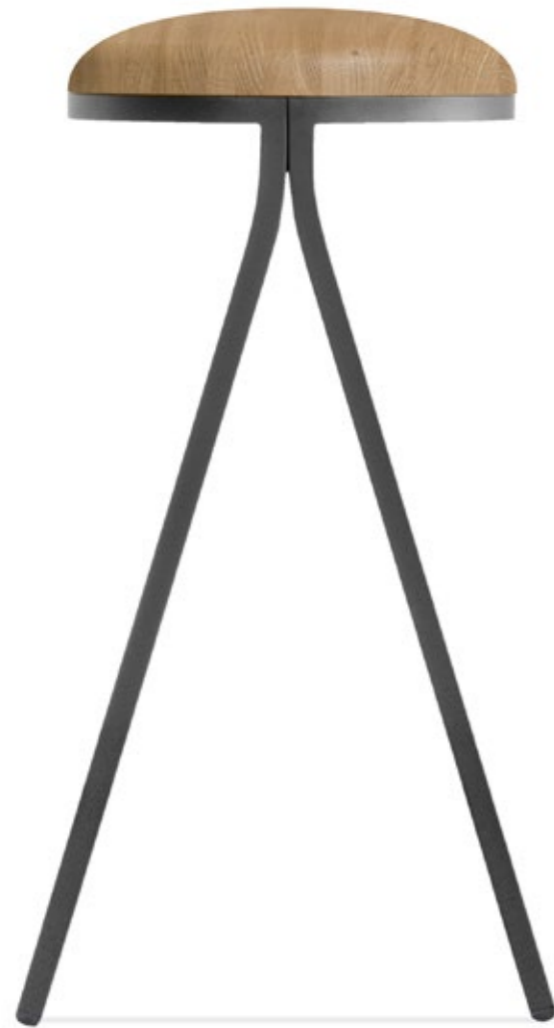
Location
Radboud University
Nijmegen - NL

Products
Curvy Barstool, Cobra

Supplier
Gispen

DOTTI

Design Kinzo Design Studio



Kinzo Design Studio

Kinzo is an architectural firm founded in Berlin with a special focus on interior design. Together with their clients, they develop user-oriented, sustainable and distinctive living and working environments. Kinzo creates innovative and unique places that bring people together, inspire, encourage and ensure greater efficiency.



Location
Minter Ellison Rudd Watts
PwC Tower, Auckland - NZ

Products
Dotti

Supplier
Unison Workspaces

Photography
Minter Ellison Rudd Watts



OMEGA

Design Favaretto & Partners

Collection

Beam seating



CURVY

Design Sigurd Rothe



Location
Groene Hart Hospital
Gouda - NL

Products
Curvy Traverse

Photography
Chris van Koeverden

FENIKS

Design Kressel+Schelle



Location
St. Antonius Hospital
Utrecht - NL

Products
Feniks, Feniks Traverse

Photography
Chris van Koeverden



ONYX

Design Kommerkors

Location
Amphia Hospital, Breda - NL

Products
Onyx Traverse

Supplier
Gispen

Architect
M+R interior architecture

Photography
Chris van Koeverden

RIVA

Design Robert Bronwasser



Robert Bronwasser

Robert Bronwasser (1968) brings passion, creativity, common sense and 25 years of experience together in functional design with a personal identity. In 1992 he graduated Cum Laude as an Industrial Designer at Delft University of Technology. Today Robert Bronwasser is a recognised designer who collaborates with creative brands and renowned labels. His work has been awarded numerous design prizes.



Collection Room-in-room



Location
SKIM, Rotterdam - NL

Products
Boston Workpod

Supplier
Desque

Photography
Chris van Koeverden

BOSTON

Design Bruno Vermeersch



Bruno Vermeersch

Bruno Vermeersch (1981, Kortrijk, Belgium) graduated as an architect from the Master of Architecture and Urban Planning – Ghent University in 2005. He worked for 10 years as a senior architect for Studio Makkink and Bey and effective from September 2015 as Editor in Chief of form studies at the Academy of Architecture.





CONTAINER POD

Design Studio Casala



Location
SKIM, Rotterdam - NL

Products
Boston Workpod,
Container Pod, Bricks

Supplier
Desque

Photography
Chris van Koeverden

CASE STUDY

HAVENHUIS ANTWERPEN

Havenhuis Antwerpen was looking for an aesthetically pleasing, acoustic solution for small forms of consultation in their open office environment. And this was required without major changes to the existing interior. A flexible space in which it is possible to quietly conduct a 1-on-1 meeting, but also to organize a work meeting for a small group of people or to attend a skype meeting. After careful consideration Port of Antwerp has opted for Container Pod.

NL

Havenhuis Antwerpen zocht een esthetisch verantwoorde, akoestische oplossing voor kleine overlegvormen in hun open kantooromgeving. En dit zonder ingrijpende aanpassingen aan het bestaande interieur door te voeren. Een flexibele ruimte, waarin het mogelijk is om rustig een 1-op-1 overleg te voeren, maar ook een werkbespreking voor een kleine groep personen te organiseren of een skype meeting te volgen. Na een zorgvuldige afweging heeft Havenhuis Antwerpen gekozen voor Container Pod.

DE

Das Havenhuis Antwerpen suchte eine ästhetisch ansprechende Akustiklösung für kleine Besprechungen in einer offenen Büroumgebung. Hierfür sollten keine drastischen Veränderungen an der bestehenden Innenausstattung durchgeführt werden müssen. Ein flexibler Raum, in dem es möglich ist, in Ruhe persönliche Besprechungen durchzuführen, in dem jedoch auch die Arbeitsbesprechung einer kleineren Gruppe organisiert oder ein Skype Meeting durchgeführt werden kann. Nach sorgfältiger Überlegung entschied sich Havenhuis Antwerpen für Container Pod.

FR

La Maison du Port à Anvers était à la recherche d'une solution esthétique et acoustique pour de petits espaces de consultation au sein de leur open-space, sans changer radicalement l'intérieur existant. Une espace flexible dans lequel il est possible de mener tranquillement une réunion en tête-à-tête, mais également d'organiser des réunions de travail en petit groupe ou d'assister à une réunion Skype. Après mûre réflexion, le Port d'Anvers a opté pour le Container Pod.



Location
Havenhuis
Antwerpen - BE

Products
Container Pod

Architect
Zaha Hadid Architects

Supplier
Forum Office

Photography
Chris van Koeverden



Scan to view the full
project online



Collection Modular



BRICKS

Design Robert Bronwasser



During the design process of the modular seating system Bricks, Designer Robert Bronwasser was inspired by the city skyline. The result is a true architectural design which shows a clear horizontal line that connects the individual elements.

Location
New Amsterdam Court House - NL

Products
Bricks

Interior Architect
Consortium NACH

Supplier
Desque

Photography
Fernando Guerra





CORALS

Design Robert Bronwasser

Location
AZ Delta Hospital
Roeselare - BE

Products
Corals

Architect
VK Architects & Engineers

Supplier
Kinnarps

Photography
AF-Fotografie

GABO MODULAR

Design Mario Ruiz



Mario Ruiz

After his studies in Industrial Design at the Elisava School of Design in Barcelona, designer Mario Ruiz (1965, Alicante, Spain) started his professional career in 1995. In part due to his craftsmanship and experience in different fields, Ruiz won the trust of more than 120 leading international companies and realised projects in Australia, USA, Canada and Europe, among others.



Location
Stadswinkel Tilburg - NL

Products
Gabo Modular

Supplier
Gispén

Photography
Caroline Martinot



Location
Stadswinkel Sittard-Geleen - NL

Products
Gabo Modular

Architect
Pove & Timmermans architecten

Supplier
Ahrend

Photography
MCM productions

STREAM

Design Arik Levy



Location
Clage, Lüneburg - DE

Products
Stream

Photography
Paul Gerdes

Collection Sofas



Location
Actor, Woerden - NL

Products
Gabo

Supplier
Lavoir

Photography
Chris van Koeverden

CAPSULE

Design Kateryna Sokolova



Kateryna Sokolova

Kateryna Sokolova (1984) is a Ukrainian industrial designer. She works within various disciplines: furniture, lighting, hardware, electronics and the environment. Kateryna participates in several European design exhibitions. For Casala's Capsule she received, among others, the German Design Award 2020 in the category "Excellent Product Design".



CASE STUDY

COGNIZANT AMSTERDAM

Cognizant is a leading global service provider that helps clients transform their business, operational and technology models for the digital age. Together with clients and partners, Cognizant works on innovative digital solutions by modernising technology and reinventing processes. The employees of Cognizant are very satisfied with their new office environment and they really feel at ease there. They also experience it as an inviting place to receive guests, whom they can easily take along in the world of Cognizant.

NL

Cognizant is een wereldwijd toonaangevende dienstverlener die klanten helpt hun business-, operationele en technologie modellen te transformeren voor het digitale tijdperk. De medewerkers van Cognizant zijn heel erg tevreden over hun nieuwe kantooromgeving en zij voelen zich er echt op hun gemak. Zij ervaren het ook als een uitnodigende plek voor de ontvangst van gasten, die zij laagdrempelig mee kunnen nemen in de wereld van Cognizant.

DE

Cognizant ist ein führender globaler Dienstleister, der seine Kunden bei der Transformation ihrer Geschäfts-, Betriebs- und Technologie Modelle für das digitale Zeitalter unterstützt. Die Mitarbeiter von Cognizant sind mit ihrer neuen Büroumgebung sehr zufrieden und fühlen sich dort wirklich wohl. Sie empfinden es auch als einen einladenden Ort, um Gäste zu empfangen, die sie problemlos in die Welt von Cognizant mitnehmen können.

FR

Cognizant est un leader mondial dans la fourniture de services permettant aux clients de moderniser leur modèle commercial, opérationnel et technologique à l'ère du digital. Les employés de Cognizant sont très satisfaits de leur nouvel environnement de travail et s'y sentent vraiment à l'aise. Ils le considèrent également comme un lieu incitant à recevoir et transporter leurs invités dans l'univers de Cognizant.



Location
Cognizant
Amsterdam - NL

Products
Bricks, Capsule

Supplier
Interior Works

Photography
Ideal Projects



Scan to view the full
project online



DINER

Design Studio Casala

TONICA

Design Favaretto & Partners



TRAIN BENCH

Design Studio Casala



Location
Brown Foreman, Brussels - BE

Products
Train Bench

Architect
Tétris Design & Build

Photography
Zibber

Collection

Space dividers & Workspots



Location
Bedrocan, Utrecht - NL

Products
Wallstreet, Capsule

Supplier
Noordhuis

Photography
Chris van Koeverden



BRICKS MEETING

Design Robert Bronwasser

Location
TU Eindhoven

Products
Bricks Meeting

Design & installation
FacilityLinq

Photography
Chris van Koeverden

CORALS MEETING

Design Robert Bronwasser



Location
Stadswinkel Tilburg - NL

Products
Corals Meeting

Supplier
Gispen

Photography
Caroline Martinot





KWART

Design Ward Huting



Ward Huting

Ward Huting (1978, Gouda) studied interior architecture and furniture design at the Minerva Academy in Groningen. He graduated there in 2003. In 2004 he founded his own interior design agency. The work of Ward Huting is characterised by a search for the basics of a piece of furniture. This search translates into recognisable and clear designs with a sense of realism.

WALLSTREET

Design Kateryna Sokolova





Collection Tables

BLENDER

Design Delphin Design



Delphin Design

Delphin Design was founded in 1992 as an office for product development and interior design by Dirk Loff and Thomas Wagner. They studied industrial design at the Kunsthochschule Berlin-Weißensee. The quality of their work, which has received many awards, is oriented towards optimum functionality, economical production and long-lasting aesthetics.





BOXTER

Design Erik Munnikhof



Erik Munnikhof

Erik Munnikhof sees it as his never-ending mission to combine the different aspects of good design, from ergonomics to economy. He studied Design in Delft, and has received many awards for his work. The idea of continual improvement is what drives him on to perfect each new draft. Since 2009, Erik has been an independent designer and also supervises students and young designers on various projects.

CLASS

Design Studio Casala



LABDA FLIPTOP

Design Studio Casala



Location
Wuxi Biologics, Dundalk - IRE

Products
Labda Fliptop, Caliber

Architect
Scott Tallon Walker

Photography
Paul O'Connell



LACROSSE

Design Jens Korte

Location
Beurs van Berlage,
Amsterdam - NL

Products
Lynx, Lacrosse

Photography
Igor Roelofsen

METRO

Design Erik Munnikhof





PLIANA

Design Jens Korte



Jens Korte

After studying Industrial Design at the Art School in Hamburg, Jens Korte (1957) worked for several design studios. Since 1999 he has worked as an independent designer and started his own agency, Jens Korte Design in Hamburg. For Casala he has designed the dynamic Lacrosse and Pliana tables, perfect for meeting rooms, conferences and many other uses where flexibility is required.

TEMO

Design Kressel+Schelle



Location
Volksbank Stendal - DE

Supplier
Poschmann Design GmbH

Photography
Ben Pohle

Location
Wohnungsbaugenossenschaft
Oranienburg - DE

Products
Tail Fold, Gabo

Architect
Poschmann Design GmbH

Photography
Ben Pohle



Collection

Coffee & Side tables

NIVO

Design Michael Hilgers



Michael Hilgers

Michael Hilgers trained as a furniture maker and successfully completed his studies in architecture. After two years of building experience and working for a large interior design studio, Michael founded his own studio in Berlin in 2001. As an architect, he concentrates on interior and product design of space-saving furniture concepts for both offices and homes. Michael has received several Interior Innovation Awards and German Innovation Awards.



TAIL

Design Arik Levy



TEMO

Design Kressel+Schelle



Location
Volksbank Stendal - DE

Products
Temo, Parker, Ravelle

Supplier
Poschmann Design GmbH

Photography
Ben Pohle

Collection overview





CHAIRS

Scan QR-code for a complete overview



Axa I folding chair



Axa III 4-leg chair



Axa III fully upholstered



Blue Conference sled base



Blue Conference steel legs



Onyx III without armrests



Onyx IV shell CPL



Onyx V wooden legs



Parker II wooden legs



Parker III high backrest



Parker III rodsteel frame



Parker III sled base



Parker IV cross base



Blue Conference wooden legs



Blue Lounge high backrest



Blue Lounge sled base



Blue Lounge steel legs



Caliber without armrests



Caliber with armrests



Carver without armrests



Cobra with armrests



Parker V cross base



Parker VI with castors



Rama with ears



Sina low backrest



Sina high backrest



Zifra numbering system



Curvy without armrests



Curvy with armrests



Cello upholstered



Centuro I padded upholstery



Centuro III high backrest



Centuro IV upholstered



Centuro VI high backrest



Cooper I without armrests



BARSTOOLS

Scan QR-code for a complete overview



Axa counter height



Axa regular height



Cobra counter height



Cobra regular height



Cobra upholstered



Cooper I Deluxe upholstered seat



Cooper II upholstered seat



Cooper II with armrests



Feniks I without armrests



Feniks I with armrests



Feniks II with armrests



Feniks XL high backrest



Feniks Bariatric with armrests



Curvy counter height



Curvy regular height



Curvy upholstered seat



Dotti low height



Dotti counter height



Dotti regular height



Noa padded seat



Noa padded upholstery



Leon low backrest



Leon II low backrest



Leon IV high backrest



Leon Lounge with armrests



Lynx I without armrests



Lynx I with armrests



Lynx II padded seat



Lynx II upholstered



Omega I counter height



Omega I regular height



Omega III counter height



Omega III regular height



Onyx counter height



Onyx padded seat



Ravelle I regular height



Ravelle III natural beech



Lynx III without armrests



Lynx III with armrests



Lynx XI with armrests



Lynx XI upholstered



Monolink plastic



Monolink upholstered seat



Noa III without armrests



Noa III with armrests



BEAM SEATING

Scan QR-code for a complete overview



Curvy plastic shell



Curvy upholstered seat



Curvy upholstered



Curvy natural beech



Curvy table element



Omega I without armrests



Omega I with armrests



Omega III without armrests



Omega III with armrests



Onyx I without armrests



Onyx I with armrests



Onyx II without armrests



Onyx II with armrests



Feniks upholstered



Feniks mesh backrest, with armrests



Feniks natural beech



Feniks table element



Onyx plastic shell



Onyx CPL shell



Onyx natural beech



Riva configuration D10



Riva configuration D11



Riva configuration D13



ROOM-IN-ROOM

Scan QR-code for a complete overview



Boston extension right



Boston Double



Boston Workpod



Bricks Pavilion square



Bricks Pavilion circle



Container Pod small



Container Pod medium



Container Pod large



Container Pod configuration D11



MODULAR

Scan QR-code for a complete overview



Bricks configuration D10



Bricks configuration D12



Bricks configuration D13



Bricks configuration D11



Bricks wall roof



Bricks meeting sofa



Bricks phone chair



Corals configuration D10



Corals configuration D11



Corals configuration D12



Corals configuration D13



Gabo Modular configuration with corner element



Gabo Modular curved configuration



Gabo Modular straight configuration



Stream corner configuration



Train Bench configuration



SOFAS

Scan QR-code for a complete overview



Capsule 1-seater



Capsule 2-seater



Capsule Lounge 1-seater



Capsule Lounge 2-seater



Capsule Lounge 3-seater



Capsule Bench 1-seater



Capsule Bench Lounge 1-seater



Capsule Bench 2-seater



Capsule Bench 2-seater, backrest left



Diner low backrest



Diner high backrest



Gabo ottoman



Gabo armchair



Gabo sofa 2,5-seater



Gabo armchair with hood



Gabo 2,5-seater with hood



Gabo Lounge corner



Siësta armchair



Siësta sofa



Tonica 1-seater



Tonica 2-seater



Tonica seating island medium



Tonica seating island large, backrest



Tonica table



SPACE DIVIDERS & WORKSPOTS

Scan QR-code for a complete overview



Bricks Wall straight



Bricks Wall curved



Bricks Wall corner



Kwart configuration



Wallstreet panel



Wallstreet end panel



Wallstreet configuration D11



Wallstreet configuration



Wallstreet workspace divider



Bricks Meeting circle



Bricks Meeting square



Bricks Workspot low bench



Bricks Workspot low straight



Bricks Workspot high straight



Bricks Workspot high curved



Bricks work armchair



Corals Meeting open



Corals Meeting closed

Product index



TABLES

Scan QR-code for a complete overview



COFFEE & SIDE TABLES

Scan QR-code for a complete overview



Chairs

Axa	26, 135, 146
Axa III	160
Blue Conference	29, 132, 144
Blue Lounge	144
Caliber	140
Carver	34
Cello	34
Centuro I	31, 145
Centuro III	30, 145
Centuro IV	7, 30, 32, 148
Centuro VI	31, 130
Cobra	75
Cooper I	136
Cooper II	160
Curvy	35, 36, 38, 40, 42
Curvy Circular	19, 21
Feniks	44, 85
Feniks II	160
Feniks XL	160
Feniks Bariatric	160
Floyd	46
Leon	160
Leon II	160
Leon IV	24, 158
Leon Lounge	160
Lynx I	23,
Lynx II	160
Lynx III	142
Lynx X1	48, 50, 68, 78
Monolink	52, 54
Noa III	160
Omega I	58
Omega III	4, 18, 57
Onyx I	61, 131, 138
Onyx II	160
Onyx III	60
Onyx IV	61
Onyx V	60
Parker II	161
Parker III	62156
Parker IV	62
Parker V	63
Parker VI	63, 64, 158
Rama	66
Sina	161

Chair numbering

Zifra	68
-------	----

Barstools

Axa Barstool	72
Cobra Barstool	34
Curvy Barstool	35, 74
Dotti Barstool	76
Noa Barstool	161
Omega I Barstool	78
Omega III Barstool	70
Onyx Barstool	60
Ravelle I	156
Ravelle III	161

Room-in-Room

Boston Phonebooth	13, 93
Boston Double	162
Boston Workpod	13, 90, 92, 94
Bricks Pavilion	162
Container Pod	94, 96

Modular

Bricks Configurations	95, 100, 114
Bricks Meeting	124
Bricks Workspot	163
Corals	98, 102, 137
Corals Meeting	126
Gabo Modular	13, 28, 104, 106
Stream	108
Train Bench	120

Sofas

Capsule	8, 112, 114, 122
Capsule Bench	163
Capsule Lounge	122
Diner	116, 152
Gabo	110, 150
Gabo Lounge	130
Siësta	163
Tonica	7, 118, 131

Space dividers & Workspots

Bricks Walls curved	46
Bricks Walls straight	163
Wallstreet	7, 122, 130, 145
Wallstreet Workspace Divider	132
Kwart	128

Tables

Blender I	134
Blender I Fix	134
Blender II Fix	135
Boxter	72, 136
Class	138
Labda Fliptop I	140
Labda Fliptop II	164
Lacrosse I	164
Lacrosse II	164
Lacrosse III	130, 142
Lacrosse V	131, 165
Metro I	145
Metro II	4, 58, 70, 78, 132, 144
Pliana I	164
Pliana V	146
Temo T-leg	148
Temo Y-leg	32
Temo Fliptop T	26, 45, 48
Temo Fliptop Y	164
Temo III	156
Temo Fliptop III	164
Temo IV	164
Zeta	164

Coffee & Side tables

Fence	67
Gabo	164
Nivo	131, 152
Tail	8, 66, 113, 150, 154

SHOWROOMS

Casala Meubelen Nederland bv

Rolweg 10
4104 AV Culemborg
The Netherlands
+31 (0)345 51 73 88
info@casala.com

Design Post Amsterdam

Cruquiusweg 111m
1019 AG Amsterdam
The Netherlands
+31 (0)20 463 39 80

Casala Objektmöbel GmbH

Magirusstraße 16
31867 Lauenau
Germany
+49 (0)5043 71 0
casala@casala.com

Casala Ltd

2 Sycamore Street
Clerkenwell, EC1Y 0SF
London
United Kingdom
+44 (0)20 3958 0058
sales@casala.com

Casala S.à.r.l.

54 rue du 19 Janvier
92380 Garches
France
+33 (0)1 47 10 02 22
contact@casala.com

www.casala.com

© Casala Meubelen Nederland B.V.

All copyrights and intellectual property rights in this publication are the property of Casala. No part of this item may be reproduced without the prior written permission of Casala. We respect the rights of third parties. If material has been produced without recognition, please inform us at marketing@casala.com.

The colours in this publication may differ to the original product. We recommend requesting a product sample. Sample service and further information: www.casala.com/samples

casala®

